

NOTICE OF SERVICE INTERRUPTION/WORK FORM

Date of Request (yyyy/mm/dd): _____		Requester: _____	
Start Date – End			
Start Date (yyyy/mm/dd) _____	Time (s) _____	Notes _____	
End Date (yyyy/mm/dd) _____	Time (s) _____	_____	
Building(s) Affected:		1: _____	2: _____
		3: _____	4: _____
Areas/Rooms Affected: _____			
Service to be interrupted:		1: _____	2: _____
		3: _____	4: _____
Description/Reason for Project:			
Contractor: _____		Phone #: _____	
Contractor/Project Managers: _____		Phone #: _____	
Should you have any questions or concerns, please contact			
Notes:			

Issue Date: May-19-16

ITEM B5

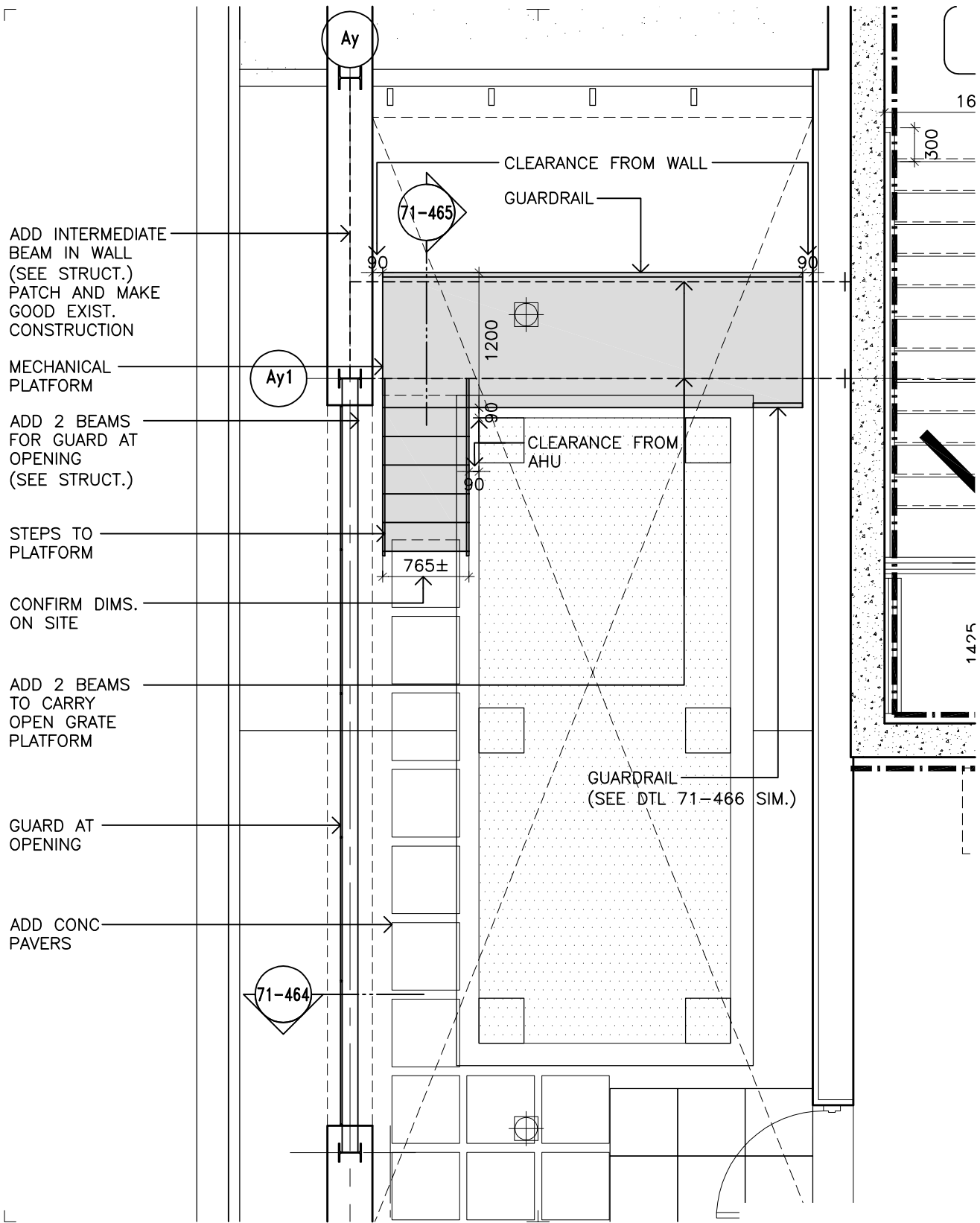
University of Windsor
University of Windsor Star

11019
file-72

The following items are proposed changes to the contract for this project. Unless noted below, work is not to proceed until authorized by a change order. All material and workmanship are to be as described in the contract documents unless otherwise stated. Please submit an itemized quotation for changes to the contract value and/or to the project schedule.

SB-14, M-020 Service Platform at Chiller, NFHB Connection, Rooftop Guard

1. CS&P Architects Inc.'s details 71-462, -463, -464, -465, -466, -467 dated 2015NOV24, consisting of 6 details, are issued as part of this Change Notice.
 2. Halsall Associates Structural Bulletin Number: 14 dated October 30, 2015, consisting of 1 typewritten page and 3 details, is issued as part of this Change Notice.
 3. For mechanical platform; steel for framing, floor grating, steps and handrails to be finished as hot dipped galvanized.
 4. For steel guard; steel for framing and steel plate for guard to be hot dipped galvanized and painted to match Benjamin Moore 'Gull Wing Grey 2134-50'.
 5. Patch and make good all existing finishes at steel framing penetrations.
 6. Provide approximately 12 pavers, to access platform steps.
-



CS&P Architects Inc.
 T: 416.482.5002 F: 416.482.5040
 cspa@csparch.com
 2345 Yonge Street, Suite 200
 Toronto, ON M4P 2E5 Canada
 www.csparch.com

CS&PArchitects

FOURTH FLOOR PLAN
 REF A2.9

Scale:
 1:50
 Date:
 2015NOV24
 Project No.

11019

Drawn by:
 PP/TK
 Revision:

Drawing No.

71-462

FILENAME: C:\Users\tkim\Documents\11019\11019 71-462.dwg

DRAWING LAST EDITED: 24NOV15 08:49:35

NOTES:

ALL STEEL TO BE HOT DIPPED GALVANIZED.

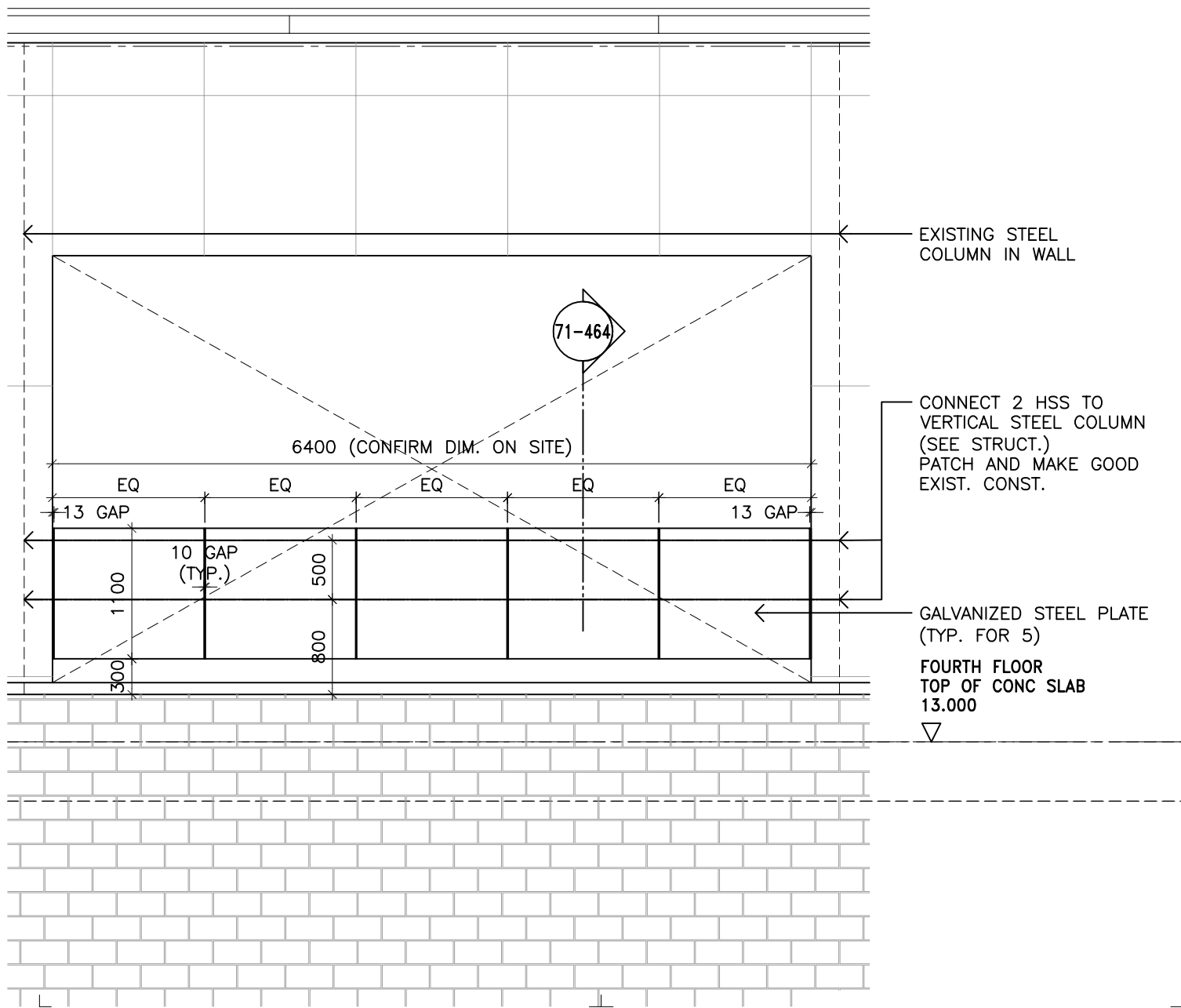
FOR SAFETY GRATING PLATFORM, USE;

BORDEN W/B BEARING BAR $\frac{3}{4}$ " x $\frac{3}{16}$ "

FOR SAFETY STEPS, USE;

BORDEN CHECKERED PLATE NOSING.

PAINT COLOUR OF GUARD AND ASSOCIATED FRAMING TO BE:
BENJAMIN MOORE GULL WING GRAY 2134-50.



CS&P Architects Inc.
 T: 416.482.5002 F: 416.482.5040
 cspa@csparch.com
 2345 Yonge Street, Suite 200
 Toronto, ON M4P 2E5 Canada
 www.csparch.com

CS&PArchitects

PART WEST ELEVATION GUARD
 REF 2/A5.2

Scale:
 1:50
 Date:
 2015NOV24
 Project No.

Drawn by:
 PP/TK
 Revision:

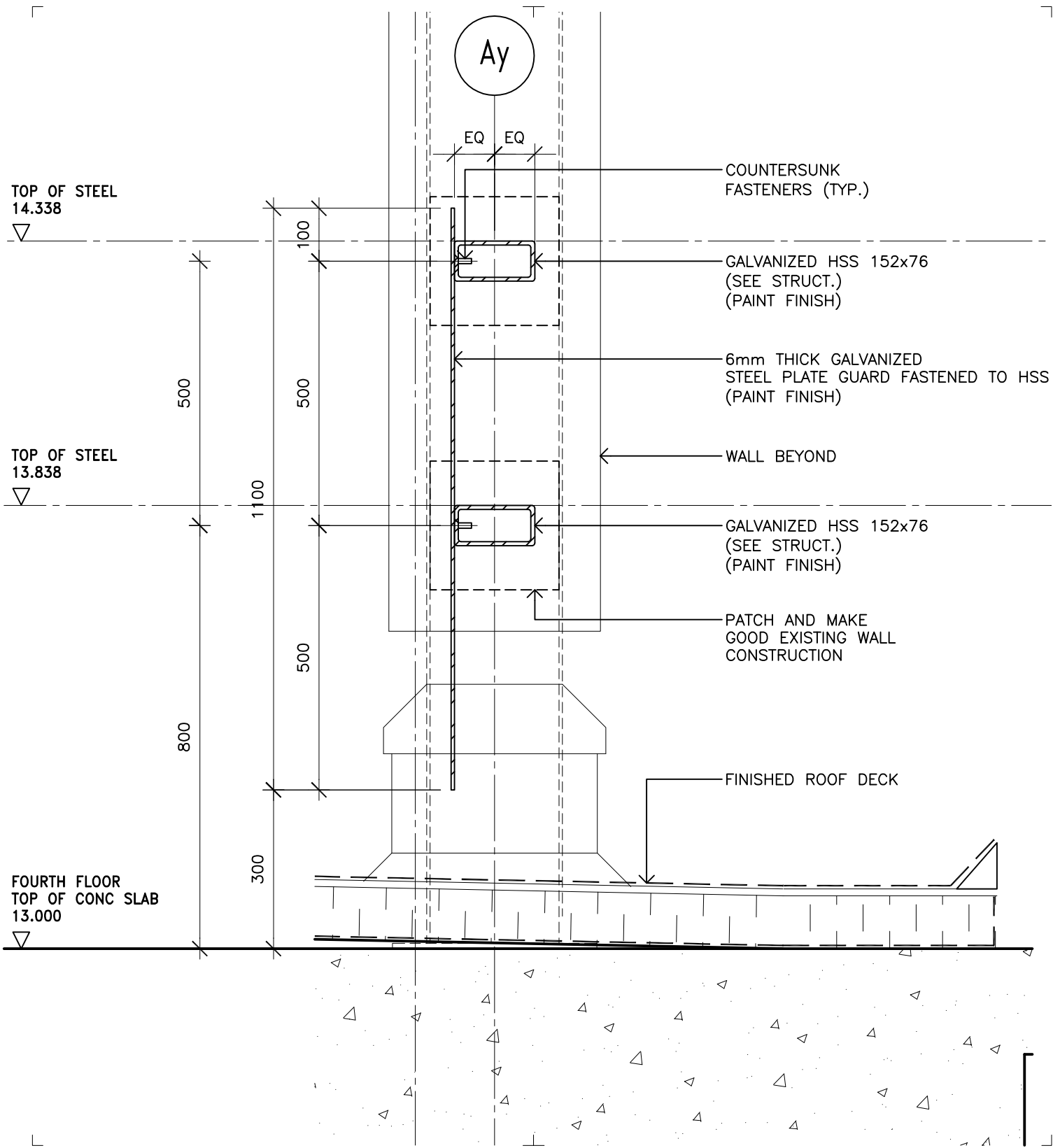
11019

Drawing No.

71-463

FILENAME: C:\Users\tkim\Documents\11019\11019 71-462.dwg

DRAWING LAST EDITED: 24NOV15 08:49:35



CS&P Architects Inc.
 T: 416.482.5002 F: 416.482.5040
 cspa@csparch.com
 2345 Yonge Street, Suite 200
 Toronto, ON M4P 2E5 Canada
 www.csparch.com

CS&PArchitects

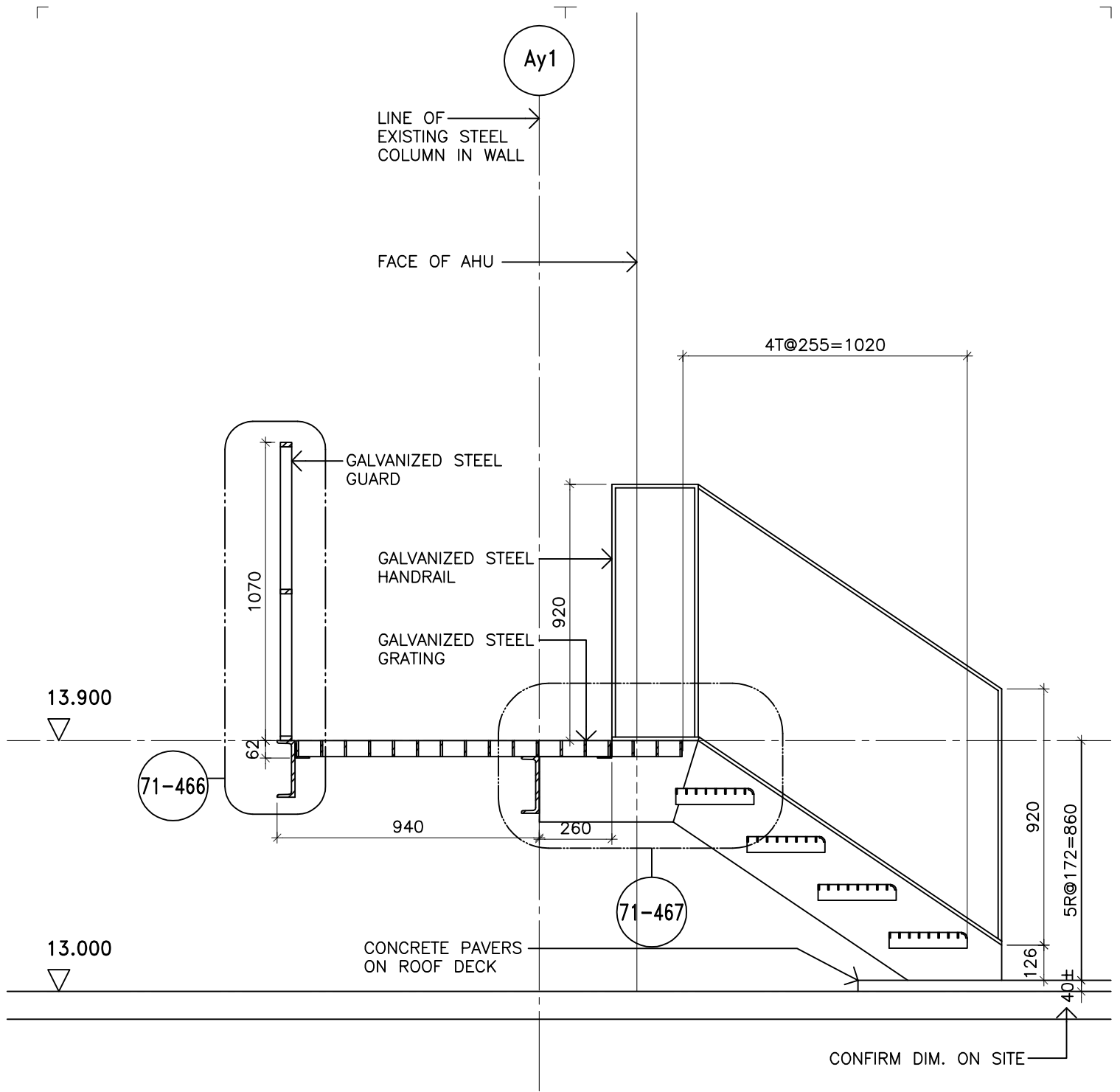
SECTION THRU GUARD
 REF 2/A5.9

Scale:
 1:10
 Date:
 2015NOV24
 Project No.
 11019

Drawn by:
 PP/TK
 Revision:

Drawing No.

71-464



CS&P Architects Inc.
 T: 416.482.5002 F: 416.482.5040
 cspa@csparch.com
 2345 Yonge Street, Suite 200
 Toronto, ON M4P 2E5 Canada
 www.csparch.com

CS&P Architects

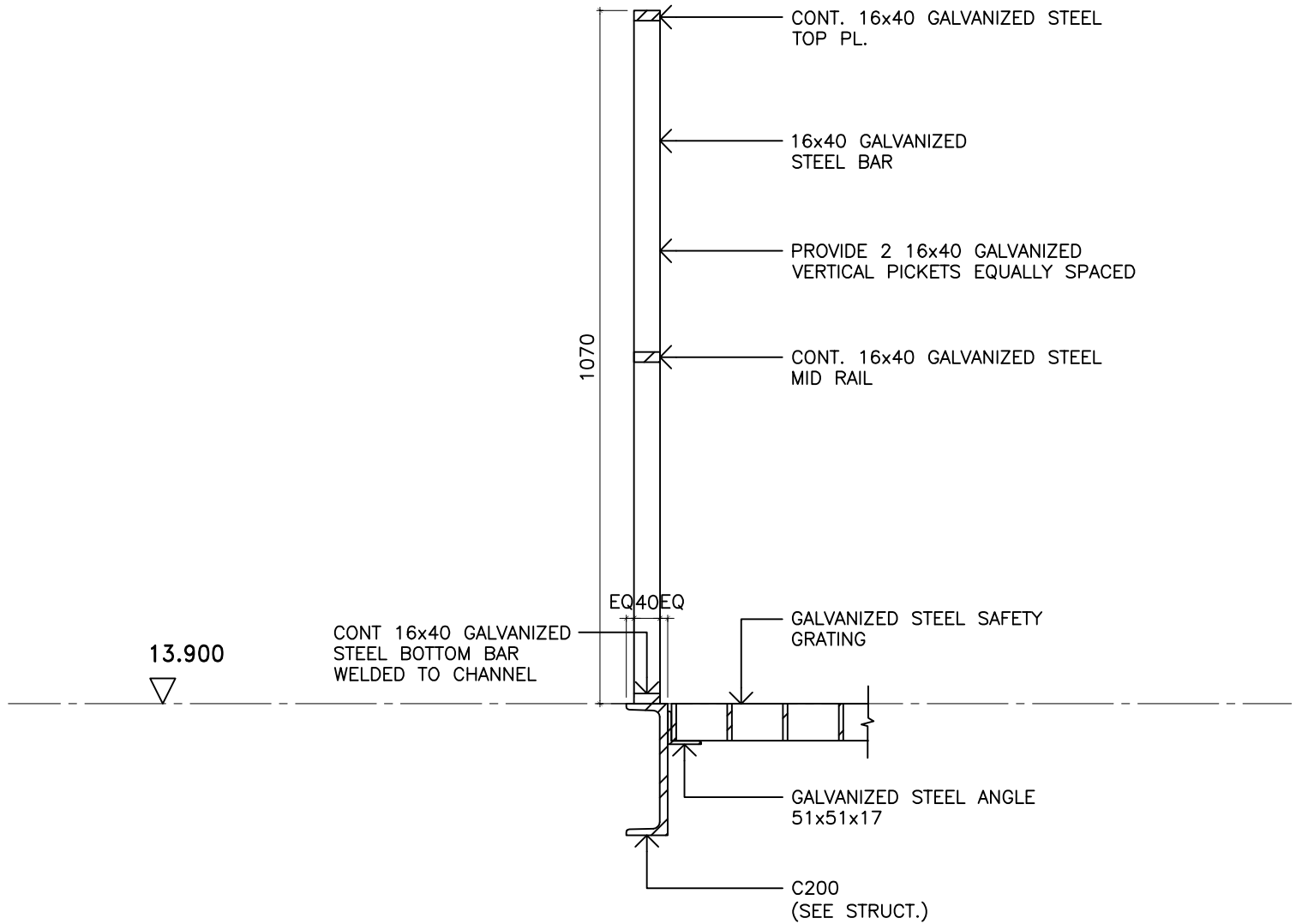
**NORTH-SOUTH SECTION THRU METAL
 METAL PLATFORM AT STAIR**

Scale:
 1:20
 Date:
 2015NOV24
 Project No.
 11019

Drawn by:
 PP/TK
 Revision:

Drawing No.

71-465



CS&P Architects Inc.
 T: 416.482.5002 F: 416.482.5040
 cspa@csparch.com
 2345 Yonge Street, Suite 200
 Toronto, ON M4P 2E5 Canada
 www.csparch.com

CS&P Architects

MECH PLATFORM SECTION/GUARDRAIL

Scale:
 1:10
 Date:
 2015NOV24
 Project No.

Drawn by:
 PP/TK
 Revision:

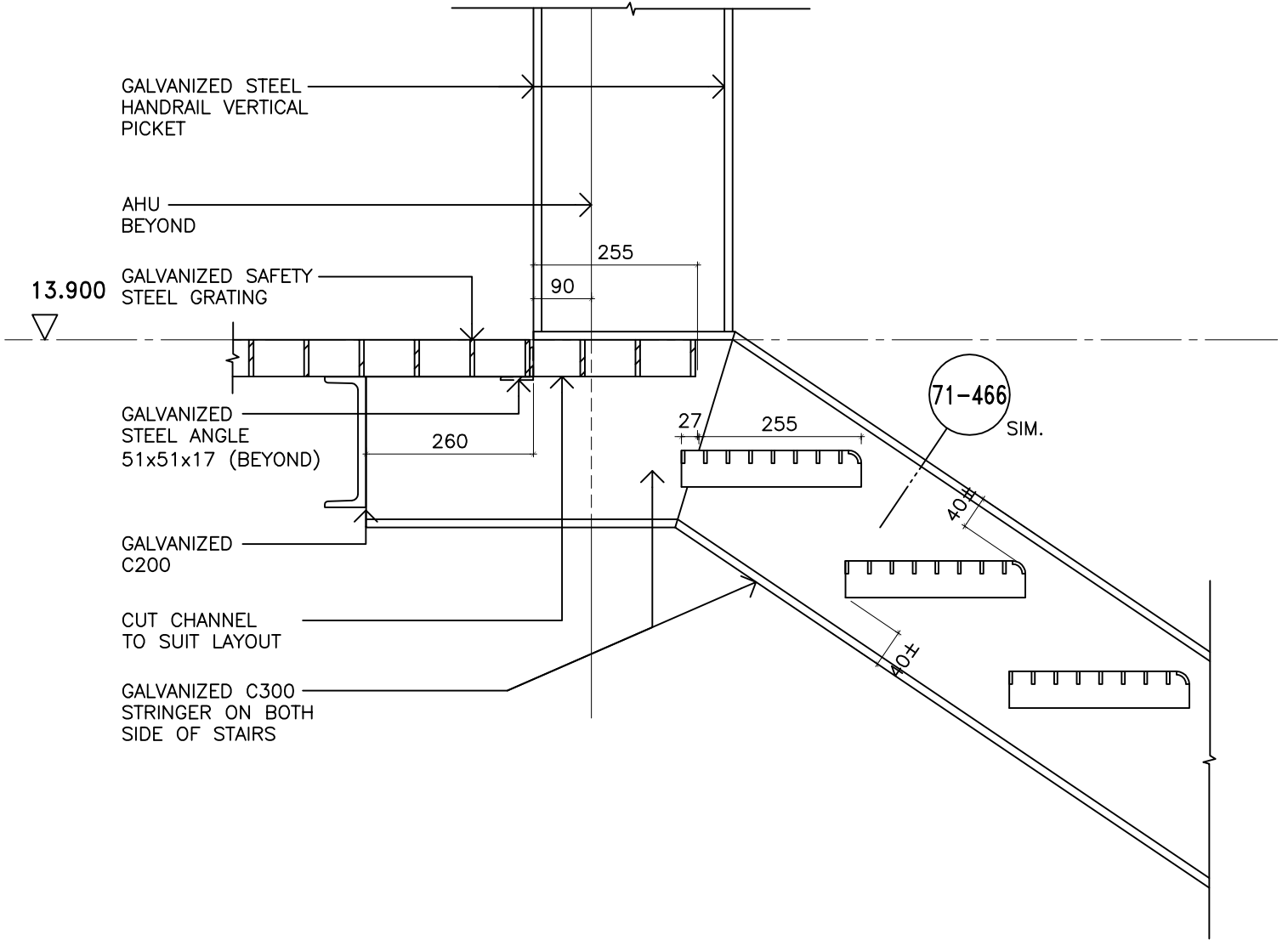
11019

Drawing No.

71-466

FILENAME: C:\Users\ikim\Documents\11019\11019 71-462.dwg

DRAWING LAST EDITED: 24NOV15 08:53:39



CS&P Architects

CS&P Architects Inc.
 T: 416.482.5002 F: 416.482.5040
 cspa@csparch.com
 2345 Yonge Street, Suite 200
 Toronto, ON M4P 2E5 Canada
 www.csparch.com

MECH PLATFORM SECTION AT STAIRS

Scale:
 1:10
 Date:
 2015NOV24
 Project No.
 11019

Drawn by:
 PP/TK
 Revision:

Drawing No.
71-467

HALSALL ASSOCIATES

Consulting Engineers
2300 Yonge St., Suite 2300
Toronto, Ontario M4P 1E4
Telephone: 416-487-5256
Fax: 416-487-9766

STRUCTURAL BULLETIN

Number: 14
Date: October 30, 2015
Project Number: 211xS183A/c1
Page 1 of 1

PROJECT NAME: UNIVERSITY OF WINDSOR – WINDSOR STAR BUILDING

ISSUED ONLY TO: CS&P ARCHITECTS INC.

ATTENTION: PETER PASTOR

EMAIL: PPASTOR@CSPARCH.COM

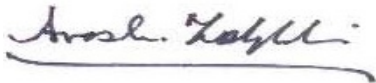
ITEM NUMBER	ITEM APPEARS ON DRAWING NUMBER	DESCRIPTION
-------------	--------------------------------	-------------

14.1	S2.6	Framing plan is revised. Refer to attached sketch SB14.1
14.2	S2.6	Section R7 is added. Refer to attached sketch SB14.2
14.3	S3.6	Elevation E3 is revised. Refer to attached sketch SB14.3 Reason for change: Architectural revision to add a platform and guardrail at the chiller.

Authorized by:

HALSALL ASSOCIATES

A WSP Company

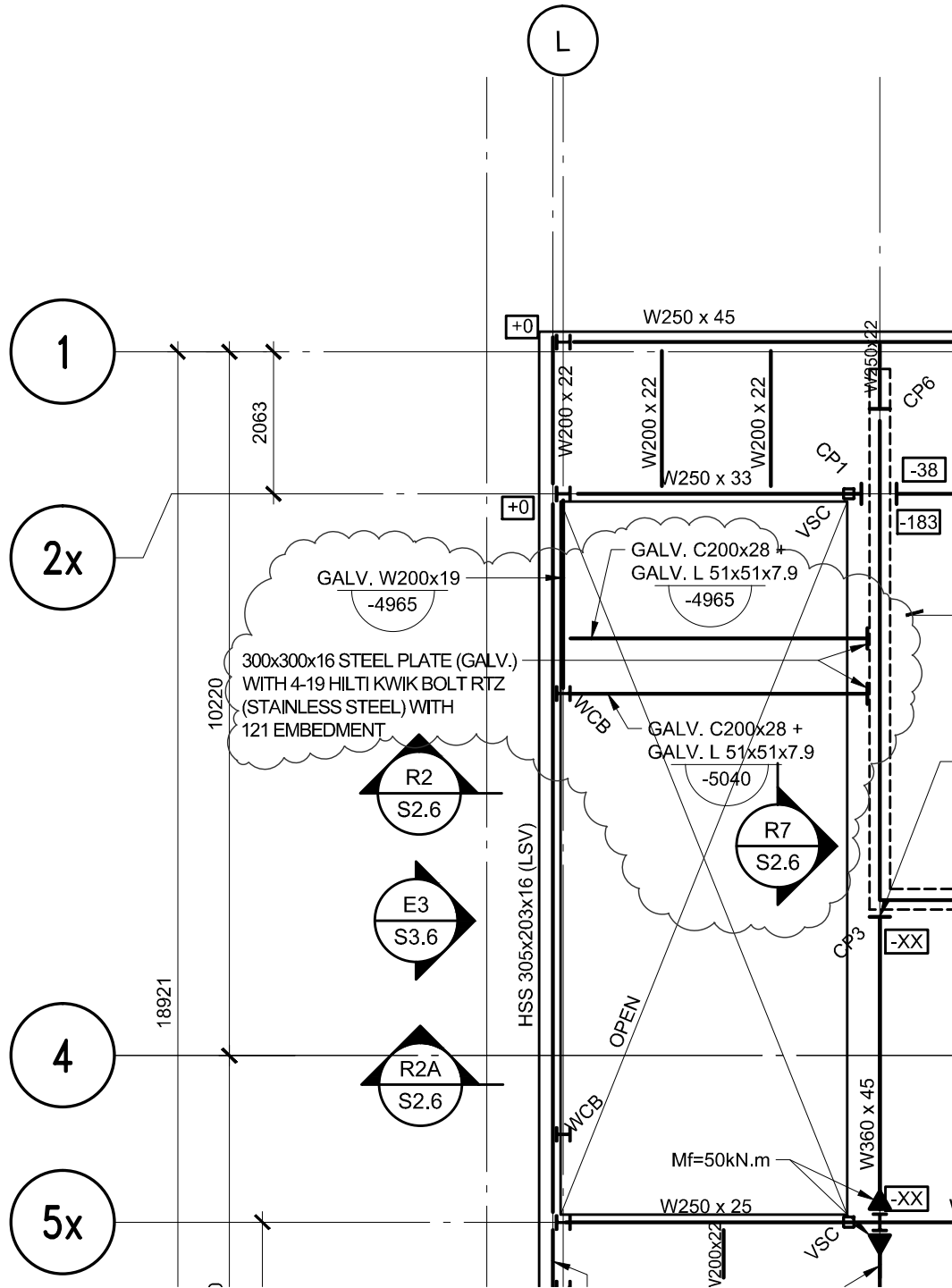


Arash Zolghadri, P.Eng.
Project Manager

211xs183 - SB14



PLOTTED BY: TCH • PLOTTED FOR: ### • PLOT DATE & TIME: 2015-10-30 10:25:27 AM • PLOT SCALE: 1:24.9205 AT 8.5"x11" SHEET SIZE. READ DRAWING ACCORDINGLY. SCALE 1:100
 FILE: P:\126\2011\21\1XS183 - WINDSOR STAR\DRAWINGS\STRUCTURAL\211XS183_S2005.DWG



© 2011 HALSALL ASSOCIATES
 UNAUTHORIZED USE IS PROHIBITED

THIS DRAWING TO BE READ IN CONJUNCTION WITH S2.6

Halsall

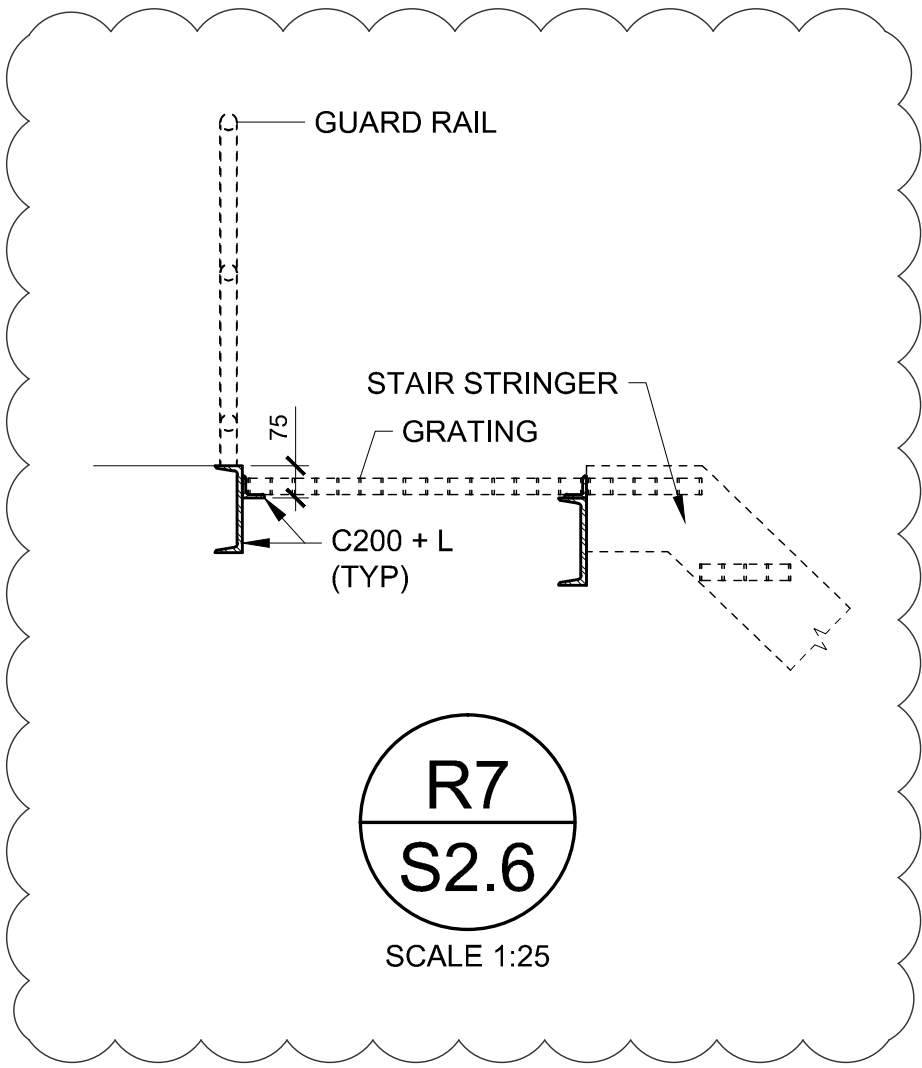
WINDSOR STAR BUILDING
WINDSOR, ONTARIO

REVISED PENTHOUSE ROOF FRAMING PLAN

2300 YONGE ST., SUITE 2300, TORONTO, ON CANADA M4P 1E4
 PHONE: 416.487.5256 halsall.com FAX: 416.487.9766

Date: OCT.30/15	Scale: 1:100
Drawn by: TCH	Checked by: ARZ
Project No. 211XS183	
Drawing No. SB14-01	

PLOTTED BY: TCH • PLOTTED FOR: ### • PLOT DATE & TIME: 2015-10-30 10:25:55 AM • PLOT SCALE: 1:24.9205 AT 8.5"x11" SHEET SIZE. READ DRAWING ACCORDINGLY.
 FILE: P:\126\2011\21XS183 - WINDSOR STAR\DRAWINGS\STRUCTURAL\21XS183_S205.DWG



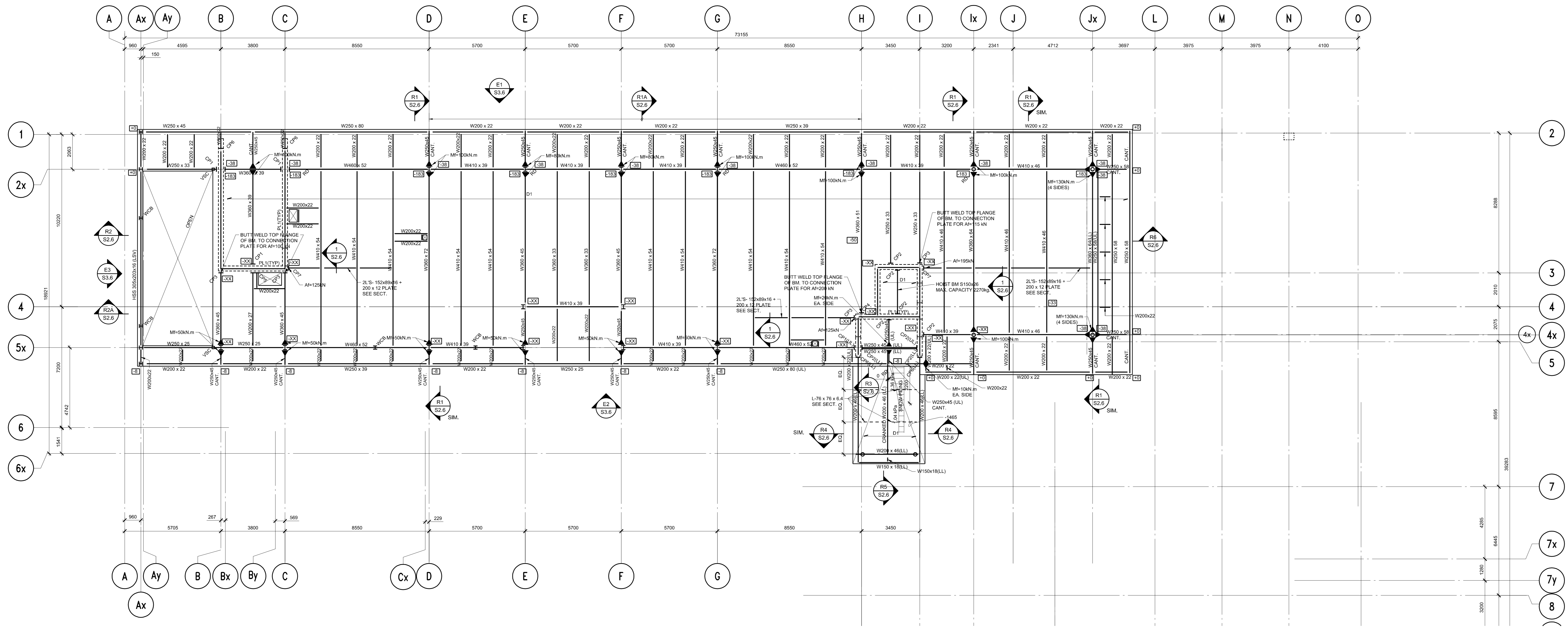
R7
 S2.6

SCALE 1:25

© 2011 HALSALL ASSOCIATES
 UNAUTHORIZED USE IS PROHIBITED

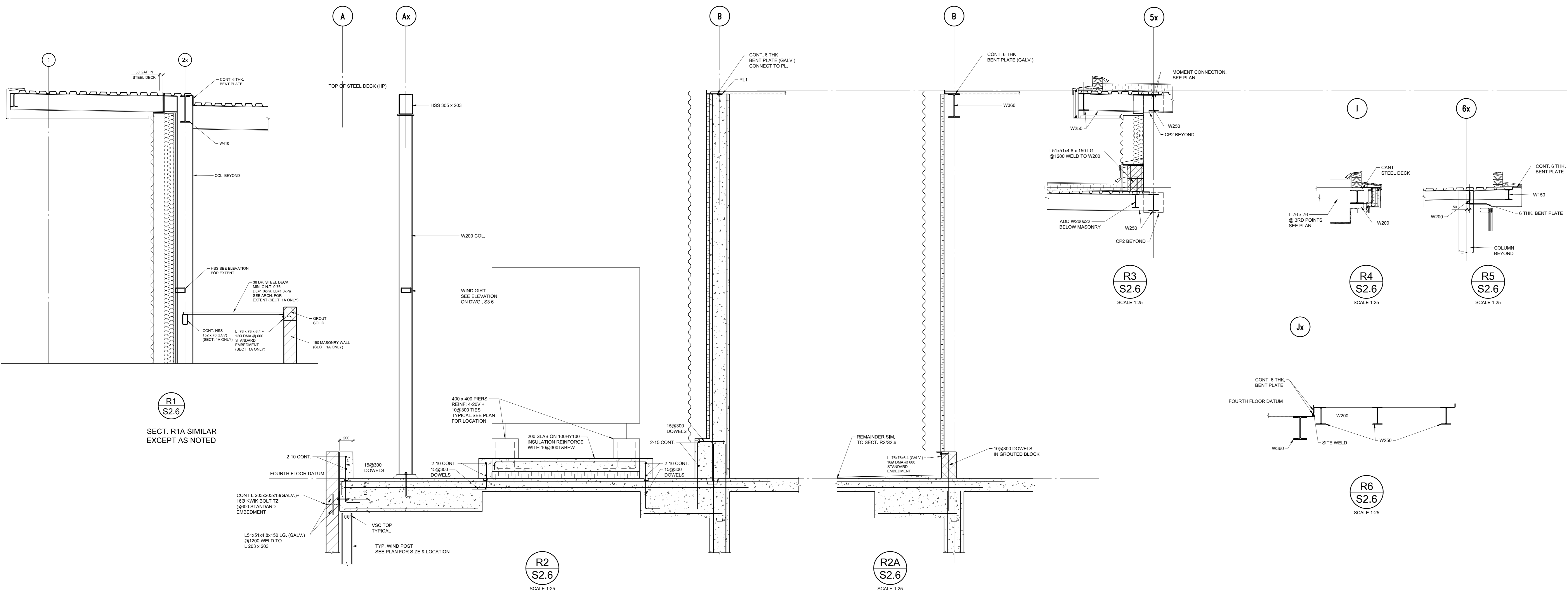
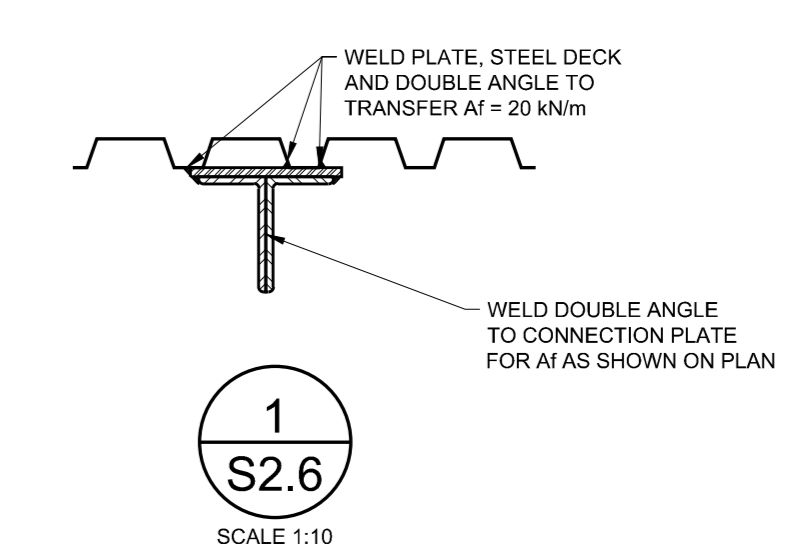
THIS DRAWING TO BE READ IN CONJUNCTION WITH S2.6

<h1>Halsall</h1>	WINDSOR STAR BUILDING	Date: OCT.30/15	Scale: AS NOTED
	WINDSOR, ONTARIO	Drawn by: TCH	Checked by: ARZ
	NEW SECTIONS	Project No. 211XS183	
	2300 YONGE ST., SUITE 2300, TORONTO, ON CANADA M4P 1E4 PHONE: 416.487.5256 halsall.com FAX: 416.487.9766	Drawing No. SB14-02	



PENTHOUSE ROOF FRAMING PLAN

- SEE GENERAL REQUIREMENTS AND TYPICAL DETAILS ON DRAWING S1.1, S1.2 & S1.3.
- PENTHOUSE ROOF DATUM ELEVATION IS +9885 FROM REFERENCE GROUND FLOOR. UNLESS OTHERWISE NOTED ON PLAN OR DETAILS, THE FOLLOWING DATA APPLIES.
- TOP OF STEEL BEAMS IS AT UNDERSIDE OF STEEL DECK.
- TOP OF STEEL DECK SLOPES. DISTANCE TO TOP OF STEEL DECK FROM DATUM ELEVATION NOTED ON PLAN.
- WHERE BEAMS NOTED WITH ϕ X IS DISTANCE TO TOP OF BEAM FROM ROOF DATUM.
- TRIM ALL SIDES OF FRAMED OPENINGS IN ROOF WITH C180 x 15.
- MINIMUM DESIGN SNOW LOAD ON ROOF IS 1.04 kPa. SNOW PILING AREAS ARE NOTED ON PLAN.
- DESIGN RAIN LOAD ON ROOF IS INDICATED ON PLAN IF IT EXCEEDS SNOW LOAD.
- "D" ON PLAN DENOTES 38 DEEP STEEL DECK MIN. CANT. 10.91 UNLESS NOTED, 20x11.5 L/SUBROCK OR RAIN.
- ROOF DECK IS DESIGNED FOR DIAPHRAGM ACTION. FACTORED SHEAR IS 20kN/m UNLESS OTHERWISE NOTED ON PLAN.
- MECHANICAL LOADS SHOWN ON PLAN ARE APPROXIMATE. EXACT MAGNITUDE AND POSITION OF MECHANICAL LOADS ARE TO BE VERIFIED WITH MECHANICAL DRAWINGS PRIOR TO JOIST DESIGN.
- DESIGN STEEL DECK FOR NET FACTORED UPLIFT OF 2.6kPa DUE TO WIND.
- "L" ON PLAN DENOTES 150x12 THICK CONTINUOUS PLATE CONNECTED WITH 160 x 200 LG. WILBRO STUDS @900.
- CRANK BEAMS WHERE INDICATED ON PLAN TO ACCOMMODATE ROOF DRAINS.
- SEE DRAWING S4.1 FOR CONNECTION PLATE SCHEDULE.
- "WCF" DENOTES WIND COLUMN BELOW. SEE DRAWING S3.3 FOR WIND COLUMN SIZE.



Key to Detail Location

No.	Detail Number
NO.	Drawing Number

If this sheet is not 31" x 43 3/4" (800 x 1095 mm) it is a reduced print - Read dim. accordingly.

Contractors must check and verify all dimensions on the job and report any discrepancies to the Architect before proceeding with the work.

All prints and specifications are the property of the Architect and must be returned at the completion of the work.

Drawings should not be scaled.

No.	Date	Revision/Issued
1	10/12/12	ISSUED FOR 30% REVIEW
2	2/10/13	ISSUED FOR 50% REVIEW
3	0/10/13	ISSUED FOR 75% COSTING
4	05/14/13	ISSUED FOR PRE-TENDER COORDINATION
5	06/04/13	ISSUED FOR 90% COST ESTIMATE
6	17/09/13	ISSUED FOR BUILDING PERMIT
7	27/09/13	ISSUED FOR TENDER
8	29/09/13	ISSUED FOR CONSTRUCTION

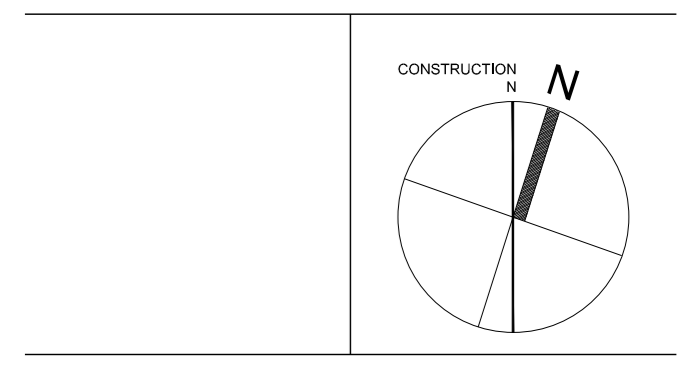
211 x S183

211 x S183

Halsall

2300 Yonge Street, Suite 2300
Toronto, ON M4P 2E5
1-888-HALSALL
416-487-9786
halsall.com

- consultants
- architect CS&P ARCHITECTS INC.
2345 Yonge St., Suite 200
Toronto, ON M4P 2E5
Phone: 416-482-6002
Fax: 416-482-5040
- associate architect INTEGRAL ARCHITECTURE INC.
3525 Dwyerwood Dr.
Windsor, ON N9E 4H2
- interior design associate MAYHEW
135 Commerce Valley Drive E
Thornhill, ON L3T 7T4
- heritage ERA ARCHITECTS INC.
10 St. Mary St., Suite 801
Toronto, ON M4Y 1P9
- structural engineer HALSALL ASSOCIATES
2300 Yonge St., Suite 2300
Toronto, ON M4P 2E5
Phone: 416-487-6256
Fax: 416-487-9786
- mechanical engineer SMITH + ANDERSEN
4211 Yonge Street, Suite 500
Toronto, ON M2P 2A9
Phone: 416-487-8151
Fax: 416-487-8104
- electrical engineer SMITH + ANDERSEN
4211 Yonge Street, Suite 500
Toronto, ON M2P 2A9
Phone: 416-487-8151
Fax: 416-487-8104
- civil engineer HADDAD MORGAN & ASSOCIATES LTD.
24 Sheppard St. E.
Windsor, ON N8X 2J8
- landscape architect BEAIRE & ASSOCIATES
3514 Walker Rd. Unit 1A
Windsor, ON N8W 3S4
- audio visual NOVITA TECHNE LIMITED
2171 Avenue Rd. Suite 105
Toronto, ON M5M 4B4



CS&P Architects Inc.

University of Windsor

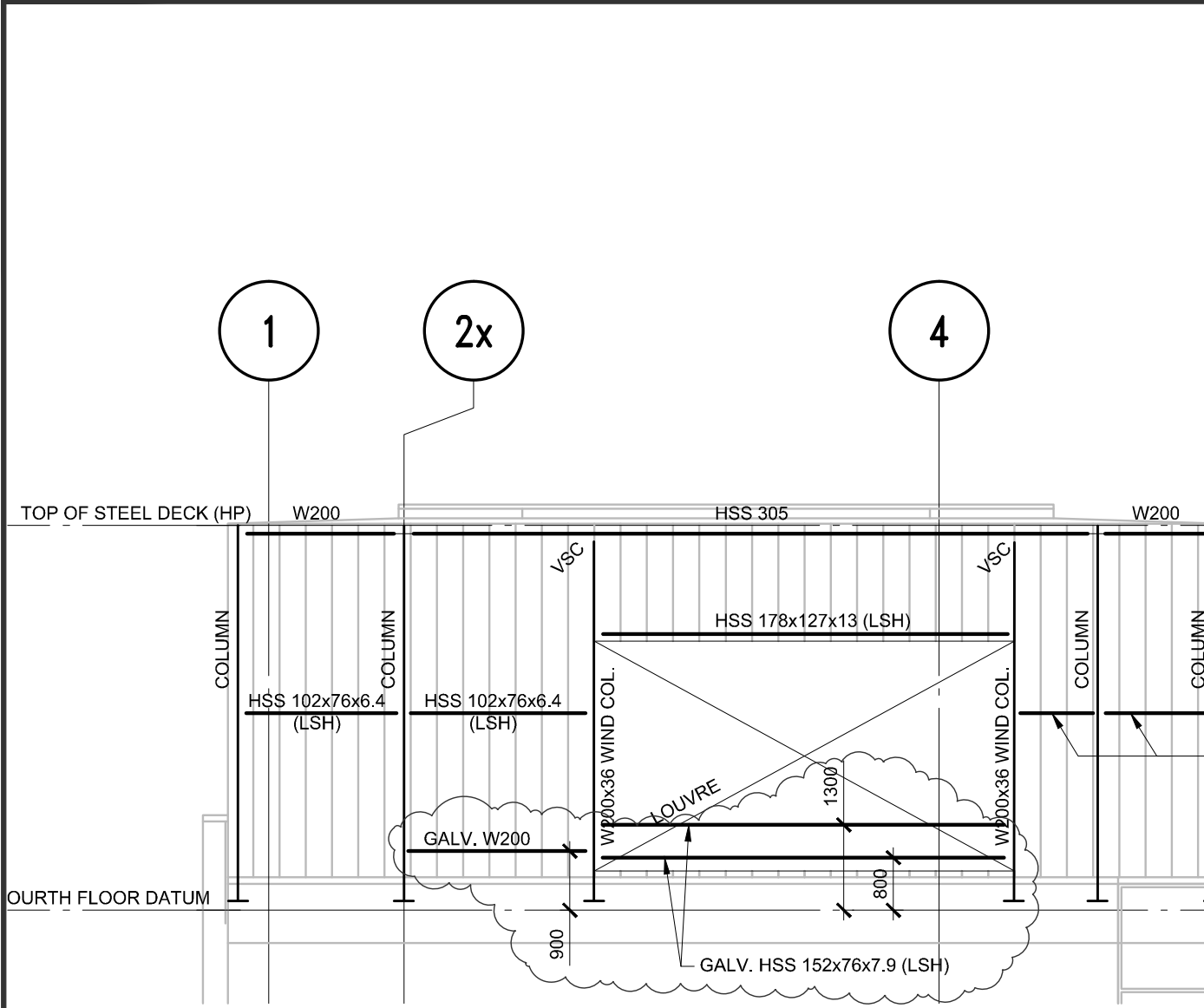
WINDSOR STAR BUILDING
167 FERRY ST.
WINDSOR, ONTARIO

**WINDSOR STAR
PENTHOUSE
ROOF FRAMING
PLAN**

scale: 1:100
date: 01 AUG 2012
drawn: RPF
checked by: LJO
project number: 11019
drawing number: **S2.6**



PLOTTED BY: TCH • PLOTTED FOR: ### • PLOT DATE & TIME: 2015-11-23 10:32:41 AM • PLOT SCALE: 1:1 AT 8.5"x11" SHEET SIZE. READ DRAWING ACCORDINGLY.
 FILE: P:\Y\2020\1\21\XS183 - WINDSOR STAR\DRAWINGS\STRUCTURAL\211XS183_S306.DWG



E3
S3.6

**WEST ELEVATION
ON LINE Ay**

 SCALE 1:100

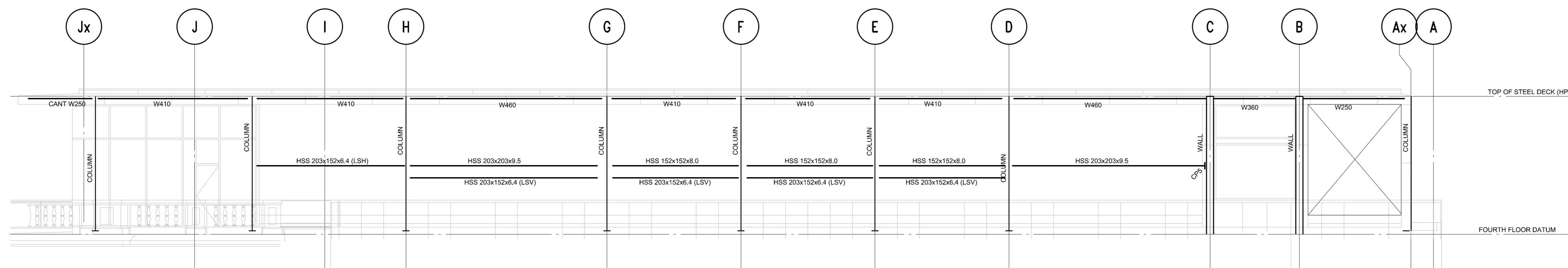
© 2015 HALSALL ASSOCIATES
UNAUTHORIZED USE IS PROHIBITED

THIS DRAWING TO BE READ IN CONJUNCTION WITH S3.6

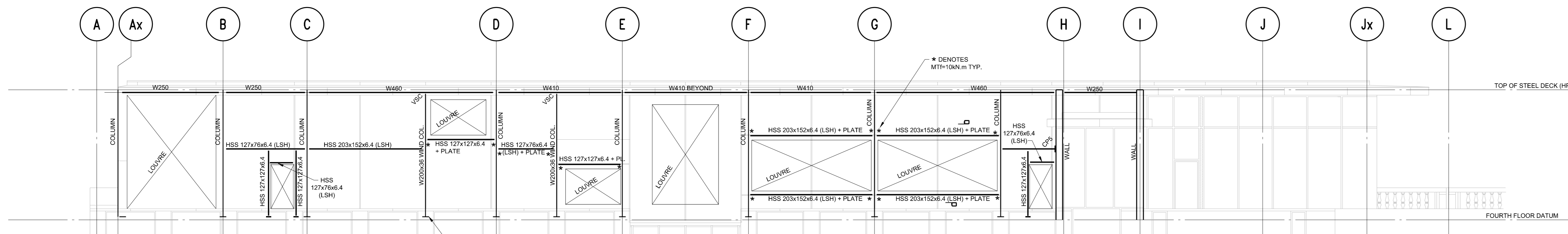


WINDSOR STAR BUILDING WINDSOR, ONTARIO
REVISED WALL ELEVATION
2300 YONGE ST., SUITE 2300, TORONTO, ON CANADA M4P 1E4 PHONE: 416.487.5256 halsall.com FAX: 416.487.9766

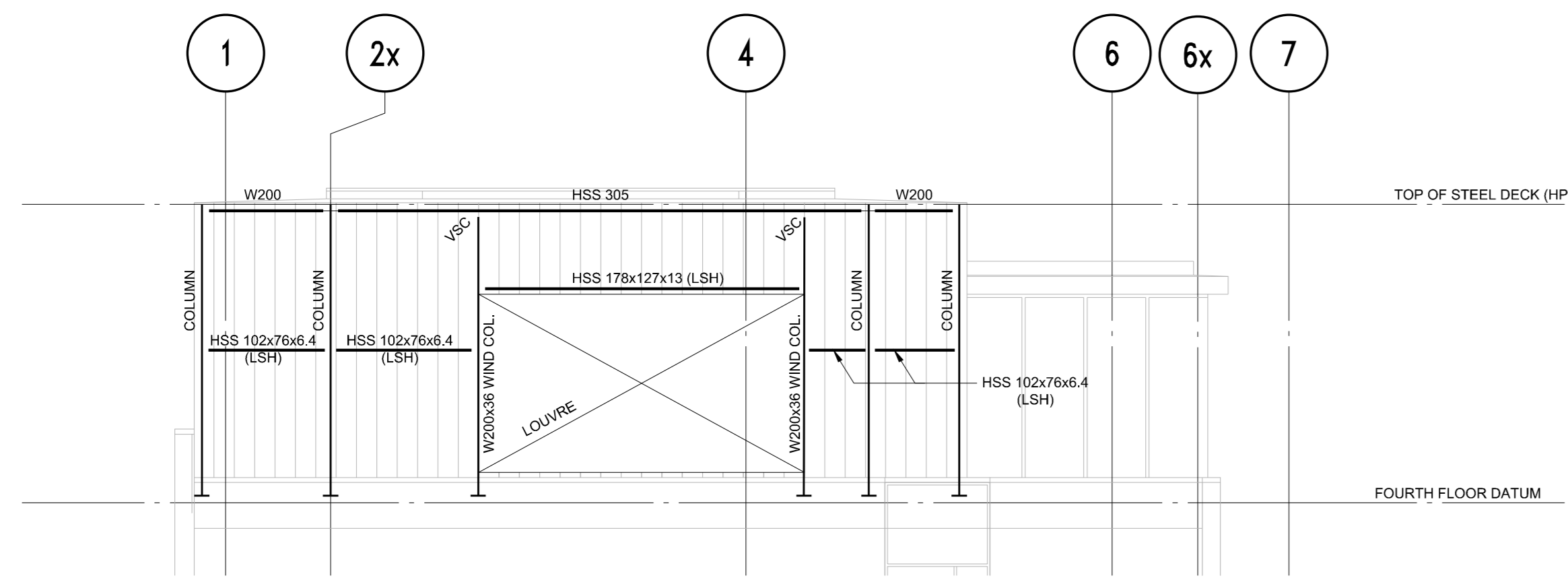
Date: OCT.30/15	Scale: 1:100
Drawn by: TCH	Checked by: ARZ
Project No. 211XS183	
Drawing No. SB14-03	



E1 NORTH ELEVATION
S3.6 ON LINE 2x
SCALE 1:100



E2 SOUTH ELEVATION
S3.6 ON LINE 5x
SCALE 1:100



E3 WEST ELEVATION
S3.6 ON LINE Ay
SCALE 1:100

Key to Detail Location
 NO. _____ Detail Number
 NO. _____ Drawing Number

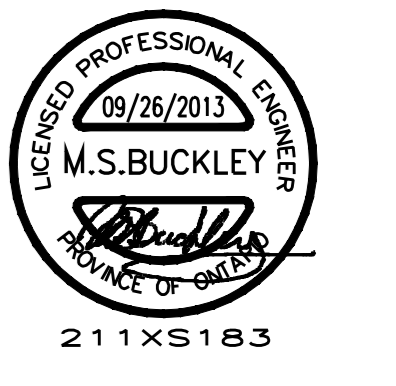
If this sheet is not 32 1/4" x 49 3/4" (820 x 1255 mm) it is a reduced print - Read dim. accordingly.

Contractors must check and verify all dimensions on the job and report any discrepancies to the Architect before proceeding with the work.

All prints and specifications are the property of the Architect and must be returned at the completion of the work.

Drawings should not be scaled.

No.	Date	Revision/Issued
1	10/12/12	ISSUED FOR 30% REVIEW
2	2/10/13	ISSUED FOR 50% REVIEW
3	01/03/13	ISSUED FOR 75% COSTING
4	05/14/13	ISSUED FOR PRE-TENDER COORDINATION
5	06/04/13	ISSUED FOR 9% CD COST ESTIMATE
6	17/09/13	ISSUED FOR BUILDING PERMIT
7	27/09/13	ISSUED FOR TENDER
8	26/09/13	ISSUED FOR CONSTRUCTION



consultants

architect CS&P ARCHITECTS INC.
2345 Yonge St., Suite 200
Toronto, ON M4P 2E5
Phone: 416-482-6002
Fax: 416-482-5040

associate architect INTEGRAL ARCHITECTURE INC.
3525 Brimwood Dr.
Windsor, ON N9E 4H2

interior design associate MAYHEW
135 Commerce Valley Drive E
Thornhill, ON L3T 7T4

heritage ERA ARCHITECTS INC.
10 St. Mary St., Suite 901
Toronto, ON M4Y 1P9

structural engineer HALSALL ASSOCIATES
2300 Yonge St., Suite 2300
Toronto, ON M4P 1E4
Phone: 416-487-6256
Fax: 416-487-9766

mechanical engineer SMITH + ANDERSEN
4211 Yonge Street, Suite 500
Toronto, ON M2P 2A9
Phone: 416-487-8151
Fax: 416-487-8104

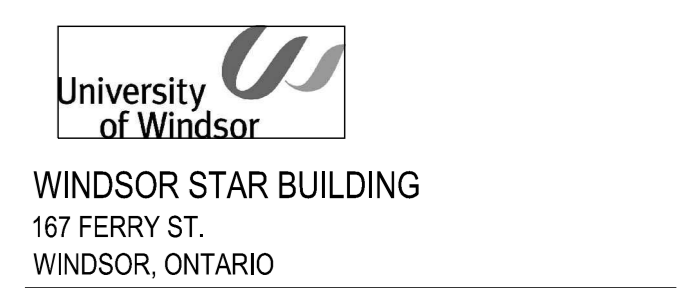
electrical engineer SMITH + ANDERSEN
4211 Yonge Street, Suite 500
Toronto, ON M2P 2A9
Phone: 416-487-8151
Fax: 416-487-8104

civil engineer HADDAD MORGAN & ASSOCIATES LTD.
24 Shepherd St. E.
Windsor, ON N8X 2J8

landscape architect BEZAIRE & ASSOCIATES
3514 Walker Rd. Unit 1A
Windsor, ON N8W 3S4

audio visual NOVITA TECHNE LIMITED
2171 Avenue Rd. Suite 105
Toronto, ON M2M 4B4

CS&P Architects Inc.



WINDSOR STAR PENTHOUSE WALL ELEVATIONS

scale: 1:100
 date: 01 AUG 2012
 drawn: RPF
 checked by: LJO
 project number: 11019
 drawing number: **S3.6**